



Pictured above: Kim Pinnick, Cancer Care success story.
Visit [BaptistHealth.com](https://www.baptisthealth.com) to learn more.

2022-2024
Baptist Health Floyd
Community Health Needs Assessment

Contents

Community Health Needs Assessment Committee	3
Introduction	4
Organization Description.....	4
Service Area.....	5
Mission, Vision, and Values	6
Purpose	7
Executive Summary	8
Framework.....	8
Profile of the Community	9
Demographics and Socioeconomics.....	9
Mortality.....	12
Cancer Incidence Rates	13
Health Statistics and Rankings.....	14
Primary Data.....	16
Community Healthcare Resources	16
Committee Discussion	17
Prioritized Health Issues	18
Communications Plan	19
Conclusions.....	19
Strategic Implementation Plan	19
Cardiovascular Disease.....	19
Mental Health	22
Social Determinants of Health.....	23
Substance Use Disorder	24
Appendix A – Data Sources.....	26
Health Departments.....	26
National Sources	26
State Sources.....	27
Appendix B – 2021 Baptist Health Louisville Public Survey Instrument	28

Community Health Needs Assessment Committee

Name

Michael Schroyer

Kayla Williams

Gregory White

Rebecca Didelot

Carla Creech

Meredith Lambe

Jessica Williams

Title

President, Baptist Health Floyd

Human Resources Business Partner

Nurse Manager

Healthier Community Educator

Healthier Community Educator

Director of Foundation

Director, Planning

Introduction

This Community Health Needs Assessment provides the foundation for Baptist Health Floyd and other local organizations to strategically plan services and improve the health of the community we serve. This document builds on Baptist Health Floyd's third Community Health Needs Assessment, published in August 2018.

Organization Description

Baptist Health Floyd

Baptist Health Floyd, a two hundred and thirty-six (236)-bed acute hospital facility, is a wholly owned subsidiary of Baptist Health. Baptist Health Floyd became part of the Baptist Health system in 2016. Baptist Health Floyd can serve all of the primary healthcare needs of its service area. Baptist Health Floyd has a 24-hour Emergency Department, inpatient and outpatient surgery, laboratory, pharmacy, and imaging capabilities, including a fixed MRI.

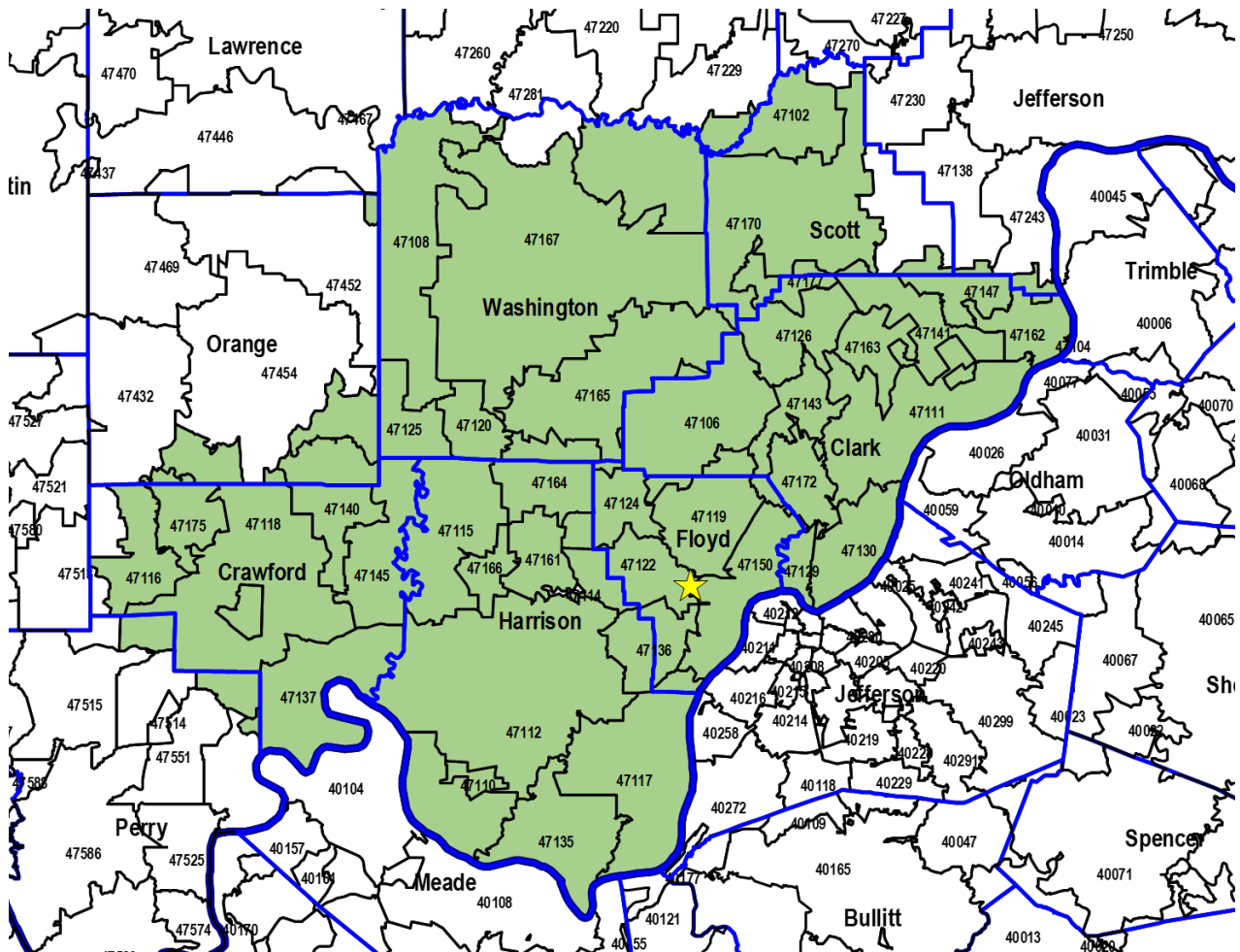
Baptist Health

Baptist Health Floyd is part of Baptist Health, a not-for-profit, 501(c)(3) healthcare corporation that owns and operates nine hospitals with 2,770 licensed beds located in Paducah, Madisonville, Louisville, La Grange, Lexington, Richmond, and Corbin, and Hardin in the commonwealth of Kentucky and in New Albany, Indiana. In addition, Baptist Health Medical Group (BHMG), a wholly owned subsidiary of Baptist Health, employs over 1,556 primary care physicians, specialty physicians, and mid-level providers and operates occupational health, physical therapy services, sports medicine, Express Care Clinics, hospice and home care services, and urgent care facilities. Baptist Health Home Care (BHHC) provides home health services in 40 counties in Kentucky, six in southern Indiana, and six in southern Illinois.

Service Area

Baptist Health Floyd defines its service area for this Community Health Needs Assessment by looking at where the majority of its inpatients reside. In CY 2020, over 37 percent of Baptist Health Floyd’s inpatients came from Floyd County. Floyd and Clark counties are a shared secondary service area with Baptist Health Louisville.

**Baptist Health Floyd
CHNA Service Area**

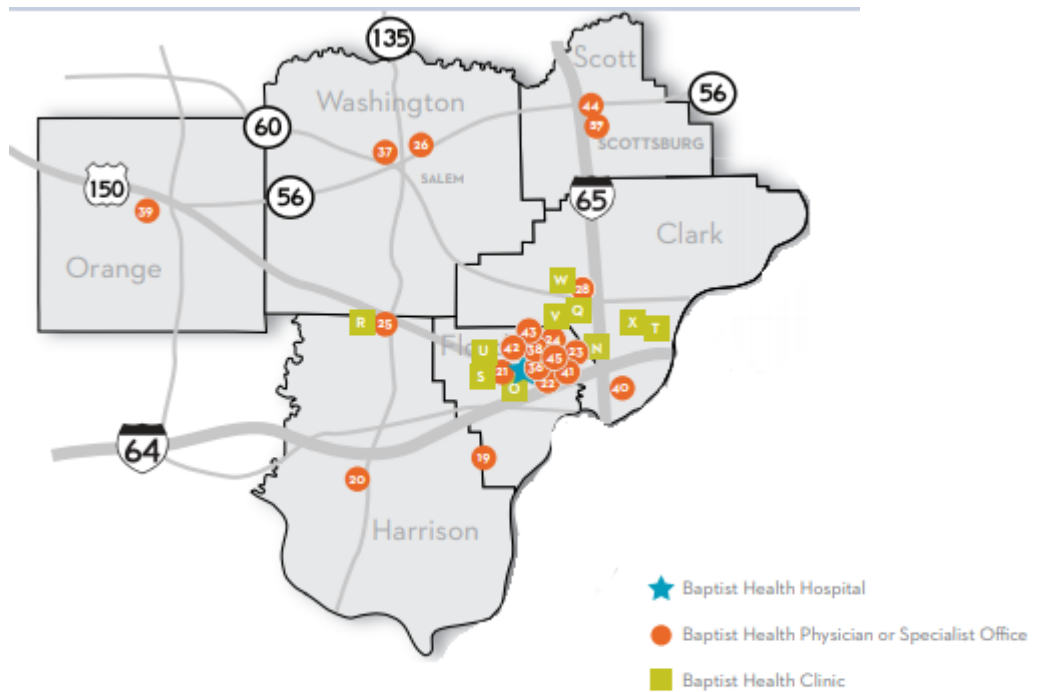


Total Discharges Patient Origin By County		
County	Discharges	% of Total
Floyd	4,105	37.07%
Clark	2,699	24.37%
Harrison	1,590	14.36%
Washington	1,113	10.05%
Scott	513	4.63%
Crawford	285	2.57%
Total CHNA Service Area	10,305	93.05%
* Other Areas	770	6.95%
Total Baptist Health Floy	11,075	100.00%

*Other includes 121 other counties

Source: Qlik, 01/01/2020 - 12/31/2021 discharges excluding normal newborns

Baptist Health Locations in Baptist Health Floyd Service Area



Mission, Vision, and Values

All Baptist Health Floyd employees are expected to help fulfill the mission, vision, and value statements adopted by the system.

Mission

Baptist Health demonstrates the love of Christ by providing and coordinating care and improving health in our communities.

Vision

Baptist Health will lead in clinical excellence, compassionate care, and growth to meet the needs of our patients.

Faith-based Values

Integrity, Respect, Compassion, Excellence, Collaboration and Joy.

Purpose

The Patient Protection and Affordable Care Act enacted March 23, 2010, added new requirements that hospital organizations must satisfy in order to be described in section 501(c)(3). Two of these requirements for hospitals are to assess the health needs of their communities and adopt implementation strategies to address identified needs.

This Community Health Needs Assessment is performed for a variety of reasons, including:

- To help meet the hospital's mission to demonstrate the love of Christ by providing and coordinating care and improving health in our communities.
- To comply with the Patient Protection and Affordable Care Act of 2010 and maintain the hospital's tax-exempt status.
- To establish community health needs for the hospital's service area to help prioritize resource allocation.
- To gather data that can be used in other efforts to obtain grants and qualify for awards and certifications.
- To determine available resources in the hospital's service area and how the hospital can coordinate activities with other agencies.
- To involve appropriate individuals and groups in the process to ensure needs are identified, efforts are not duplicated, and the correct agencies to handle specific issues are identified in the strategic implementation plan.
- To create a sustainable process for conducting a Community Health Needs Assessment that can be replicated and continued for future assessments.

Executive Summary

The Patient Protection and Affordable Care Act of 2010 includes a provision that requires every tax- exempt, non-governmental hospital to:

- Conduct a Community Health Needs Assessment (CHNA) at least every three years
- Adopt a Strategic Implementation Plan (SIP) that identifies how the needs identified in the assessment will be met and by whom
- Report to the Internal Revenue Service via its 990 tax form how it is meeting its implementation plan

The CHNA must show how broad input from the community served by the hospital was collected and must be made widely available to the public.

This report details the process used to gather, disseminate, and prioritize the information used in the assessment. Baptist Health Floyd worked closely with numerous institutions, agencies, and individuals representing public health, other hospitals, and community members.

Framework

Baptist Health Floyd defines its service area for this Community Health Needs Assessment by looking at where the majority of its inpatients reside. In CY 2020, 93% percent of Baptist Health Floyd's inpatients came from Clark, Crawford, Floyd, Harrison, Scott and Washington counties in Indiana.

A wide variety of community resources were consulted during this update. It began with meetings between the Baptist Health hospitals. During these meetings, updates to the 2021 CHNA were discussed. There are six health departments responsible for the counties Baptist Health Floyd serves: Clark County Health Department; Crawford County Health Department; Floyd County Health Department; Harrison County Health Department; Scott County Health Department; and Washington County Health Department. Through our primary contacts Floyd County Health Department, New Albany Floyd County School System, Federally Qualified Health Clinic and other nonprofit community organizations, as well as public agencies, public surveys and focus groups, Baptist Health Floyd solicited primary feedback on the updated health issues confronting its service area today.

Secondary data from demographics and socioeconomic sources, Indiana vital statistics, disease prevalence, and health indicators and statistics were updated. National, state, and local sources were used. This data will be shared in the next section.

Finally, the Community Health Needs Assessment Committee met to consider all the updated information. They discussed the data presented and created a revised list of the health issues that were identified in both primary and secondary data sources. After robust interaction, the committee prioritized the list and discussed various ways the hospital could help to meet these needs. A summary of the identified needs and goals was presented to the hospital board for approval. After these were incorporated, the CHNA was approved by the hospital and system boards.

Profile of the Community

Demographics and Socioeconomics

Baptist Health Floyd serves ZIP codes in Clark, Crawford, Floyd, Harrison, Scott and Washington counties in Indiana. The following table shows the demographics and socioeconomic characteristics of Baptist Health Floyd's service area for the most recent period available. The previous CHNA reflected only Floyd County, thus the statistics are substantially different.

2019 Demographic Snapshot

Area: BH Floyd

Level of Geography: Primary Service Area by ZIP Code

DEMOGRAPHIC CHARACTERISTICS

	Selected Area		USA		2019	2024	% Change
	Area	USA					
2010 Total Population		308,745,538		Total Male Population	148,136	151,761	2.4%
2019 Total Population	301,651	329,236,175		Total Female Population	153,515	157,348	2.5%
2024 Total Population	309,109	340,950,101		Females, Child Bearing Age (14-44)	57,602	57,846	0.4%
% Change 2019 - 2024	2.5%	3.6%					
Average Household Income	\$72,525	\$89,646					

POPULATION DISTRIBUTION

Age Group	Age Distribution				
	2019		2024		USA 2019
	Pop	% of Total	Pop	% of Total	% of Total
0-13	51,702	17.1%	51,464	16.6%	18.6%
14-20	26,367	8.7%	26,923	8.7%	3.9%
21-24	14,252	4.7%	15,358	5.0%	9.6%
25-34	37,058	12.3%	36,140	11.7%	13.5%
35-54	78,373	26.0%	76,335	24.7%	25.3%
55-64	42,621	14.1%	42,567	13.8%	12.9%
65+	51,278	17.0%	60,332	19.5%	16.2%
Total	301,651	100.0%	309,119	100.0%	100.0%

HOUSEHOLD INCOME DISTRIBUTION

2019 Household Income	Income Distribution		
	2019		USA
	HH Count	% of Total	% of Total
<\$15K	11,477	9.6%	10.5%
\$15-25K	11,477	9.6%	9.1%
\$25-50K	30,677	25.5%	21.5%
\$50-75K	22,966	19.1%	16.9%
\$75-100K	16,256	13.5%	12.3%
Over \$100K	27,251	22.7%	29.7%
Total	120,104	100.0%	100.0%

EDUCATION LEVEL

2019 Adult Education Level	Education Level Distribution		
	Pop Age 25+		USA
	Pop	% of Total	% of Total
Less than High School	7,540	3.6%	5.4%
Some High School	16,989	8.2%	7.3%
High School Degree	75,765	36.4%	27.3%
Some College/Assoc. Degree	65,637	31.6%	29.0%
Bachelor's Degree or Greater	42,045	20.2%	31.0%
Total	207,976	100.0%	100.0%

RACE/ETHNICITY

Race/Ethnicity	Race/Ethnicity Distribution		
	2019		USA
	Pop	% of Total	% of Total
White Non-Hispanic	267,041	88.5%	60.0%
Black Non-Hispanic	13,675	4.5%	12.4%
Hispanic	11,279	3.7%	18.4%
Asian & Pacific Is. Non-Hispanic	2,573	0.9%	5.9%
All Others	7,083	2.3%	3.3%
Total	301,651	100.0%	100.0%

Source: Truven Health Analytics

Service Area Defined: Clark, Crawford, Floyd, Harrison, Scott, and Washington Counties in Indiana

There are approximately 242,295 persons in the previously defined adult population (16+) with a labor force of 152,571. Residents are slightly wealthier and more racially and ethnically homogenous than the U.S. as a whole. Most are employed with lower than state average unemployment.

Labor Force Characteristics
Area: BH Floyd Service Area
2019 ZIP Code Report
 Ranked on 2019 Total Population 16+ (Desc)

ZIP Code	ZIP City Name	2019 Total Population 16+		Total Labor Force		employed in Civilian Labor Force		Employed in Armed Forces		Unemployed in Labor Force		Females in Labor Force	
		Count	%Down	Count	%Across	Count	%Across	Count	%Across	Count	%Across	Count	%Across
47150	New Albany	38,458	15.9%	24,853	64.6%	23,638	61.5%	5	0.0%	1,210	3.1%	12,247	60.4%
47130	Jeffersonville	37,642	15.5%	24,227	64.4%	22,715	60.3%	1	0.0%	1,511	4.0%	12,232	62.6%
47129	Clarksville	15,810	6.5%	9,792	61.9%	9,269	58.6%	0	0.0%	523	3.3%	4,689	56.6%
47172	Sellersburg	14,648	6.0%	9,934	67.8%	9,485	64.8%	10	0.1%	439	3.0%	4,840	63.6%
47112	Corydon	13,584	5.6%	8,631	63.5%	8,165	60.1%	1	0.0%	465	3.4%	4,219	60.7%
47111	Charlestown	12,930	5.3%	8,123	62.8%	7,688	59.5%	0	0.0%	435	3.4%	3,867	57.8%
47167	Salem	12,154	5.0%	7,135	58.7%	6,580	54.1%	4	0.0%	551	4.5%	3,318	53.4%
47170	Scottsburg	11,733	4.8%	6,965	59.4%	6,576	56.0%	28	0.2%	361	3.1%	3,097	51.8%
47119	Floyds Knobs	9,562	3.9%	6,339	66.3%	6,166	64.5%	0	0.0%	173	1.8%	2,944	60.3%
47122	Georgetown	8,590	3.5%	5,882	68.5%	5,651	65.8%	0	0.0%	231	2.7%	2,824	64.6%
47102	Austin	5,412	2.2%	3,036	56.1%	2,774	51.3%	0	0.0%	262	4.8%	1,402	51.0%
47165	Pekin	4,923	2.0%	2,993	60.8%	2,703	54.9%	2	0.0%	288	5.9%	1,352	54.8%
47106	Borden	4,124	1.7%	2,853	69.2%	2,698	65.4%	1	0.0%	154	3.7%	1,353	65.3%
47136	Lanesville	3,898	1.6%	2,543	65.2%	2,452	62.9%	0	0.0%	91	2.3%	1,166	59.0%
47138	Lexington	3,805	1.6%	2,243	58.9%	2,077	54.6%	0	0.0%	166	4.4%	1,015	53.7%
47126	Henryville	3,741	1.5%	2,348	62.8%	2,238	59.8%	1	0.0%	109	2.9%	1,125	61.8%
47124	Greenville	3,704	1.5%	2,570	69.4%	2,479	66.9%	0	0.0%	91	2.5%	1,254	66.6%
47117	Elizabeth	3,632	1.5%	2,234	61.5%	2,088	57.5%	10	0.3%	136	3.7%	1,019	56.4%
47164	Palmyra	3,070	1.3%	1,841	60.0%	1,634	53.2%	0	0.0%	207	6.7%	842	54.7%
47143	Memphis	3,021	1.2%	1,932	64.0%	1,830	60.6%	1	0.0%	101	3.3%	1,016	66.5%
47161	New Salisbury	3,013	1.2%	1,763	58.5%	1,642	54.5%	0	0.0%	121	4.0%	797	52.9%
47118	English	2,698	1.1%	1,378	51.1%	1,316	48.8%	0	0.0%	62	2.3%	605	45.1%
47140	Marengo	2,114	0.9%	1,262	59.7%	1,171	55.4%	3	0.1%	88	4.2%	575	54.7%
47115	Depauw	1,995	0.8%	1,180	59.1%	1,073	53.8%	0	0.0%	107	5.4%	530	53.6%
47108	Campbellsburg	1,857	0.8%	1,072	57.7%	1,006	54.2%	0	0.0%	66	3.6%	453	49.5%
47145	Milltown	1,557	0.6%	912	58.6%	840	53.9%	3	0.2%	69	4.4%	409	53.2%
47125	Hardinsburg	1,404	0.6%	835	59.5%	804	57.3%	0	0.0%	31	2.2%	358	52.0%
47141	Marysville	1,372	0.6%	805	58.7%	743	54.2%	0	0.0%	62	4.5%	391	56.5%
47163	Otisco	1,262	0.5%	795	63.0%	751	59.5%	0	0.0%	44	3.5%	377	59.5%
47177	Underwood	1,257	0.5%	768	61.1%	729	58.0%	0	0.0%	39	3.1%	357	58.0%
47137	Leavenworth	1,169	0.5%	577	49.4%	540	46.2%	0	0.0%	37	3.2%	240	41.1%
47135	Laconia	1,120	0.5%	687	61.3%	640	57.1%	3	0.3%	44	3.9%	305	56.4%
47166	Ramsey	1,117	0.5%	651	58.3%	612	54.8%	0	0.0%	39	3.5%	295	52.7%
47147	Nabb	864	0.4%	505	58.4%	469	54.3%	0	0.0%	36	4.2%	243	55.0%
47142	Mauckport	833	0.3%	507	60.9%	471	56.5%	3	0.4%	33	4.0%	235	56.2%
47120	Fredericksburg	802	0.3%	486	60.6%	440	54.9%	0	0.0%	46	5.7%	218	54.6%
47162	New Washington	735	0.3%	430	58.5%	397	54.0%	0	0.0%	33	4.5%	219	56.6%
47175	Taswell	715	0.3%	377	52.7%	364	50.9%	0	0.0%	13	1.8%	153	45.0%
47116	Eckerty	680	0.3%	356	52.4%	345	50.7%	0	0.0%	11	1.6%	144	44.3%
47114	Crandall	441	0.2%	257	58.3%	244	55.3%	0	0.0%	13	2.9%	115	52.5%
47110	Central	409	0.2%	249	60.9%	231	56.5%	1	0.2%	17	4.2%	116	56.3%
47160	New Middletown	170	0.1%	109	64.1%	106	62.4%	0	0.0%	3	1.8%	53	57.6%
47123	Grantsburg	144	0.1%	74	51.4%	71	49.3%	0	0.0%	3	2.1%	31	43.7%
47174	Sulphur	126	0.1%	62	49.2%	58	46.0%	0	0.0%	4	3.2%	26	40.6%
Total		242,295	100.0%	152,571	63.0%	143,969	59.4%	77	0.0%	8,525	3.5%	73,066	

Source: Truven Health Analytics

Service Area Defined: Clark, Crawford, Floyd, Harrison, Scott, and Washington Counties in Indiana

The cities of Floyd Knobs, Crandall and Sellersburg are above average in household income and home value. Portions of Crawford, Harrison, and Washington counties are all below average socioeconomically. The rest of the service area falls into the average categories for household income and home value.

Households by Socioeconomic Characteristics
Area: Licensed Area 7-6-15
2019 ZIP Code Report
Ranked on 2019 Households (Desc)

ZIP Code	ZIP City Name	2019 Total Households		2019 Median HH	2019 Median Age of Total Population	2019 Median Home Value
		Count	%Down	Income	Population	Value
47150	New Albany	20,301	16.9%	\$49,975	39.2	\$151,011
47130	Jeffersonville	19,679	16.4%	\$52,146	39.5	\$144,781
47129	Clarksville	8,552	7.1%	\$42,941	39.4	\$122,626
47172	Sellersburg	6,961	5.8%	\$78,948	39.4	\$195,280
47112	Corydon	6,734	5.6%	\$61,586	40.8	\$163,923
47111	Charlestown	6,121	5.1%	\$63,638	38.5	\$174,713
47167	Salem	5,959	5.0%	\$47,484	41.6	\$118,503
47170	Scottsburg	5,789	4.8%	\$55,563	41.8	\$120,878
47119	Floyds Knobs	4,278	3.6%	\$96,240	45.0	\$270,791
47122	Georgetown	3,936	3.3%	\$77,998	41.3	\$216,998
47102	Austin	2,585	2.2%	\$46,250	41.4	\$98,168
47165	Pekin	2,282	1.9%	\$55,392	41.6	\$128,165
47106	Borden	1,908	1.6%	\$75,968	42.9	\$205,995
47136	Lanesville	1,835	1.5%	\$73,445	42.9	\$200,226
47138	Lexington	1,772	1.5%	\$58,356	42.9	\$130,290
47117	Elizabeth	1,731	1.4%	\$66,655	44.5	\$150,434
47126	Henryville	1,668	1.4%	\$67,422	40.9	\$162,550
47124	Greenville	1,651	1.4%	\$79,971	42.4	\$235,748
47164	Palmyra	1,520	1.3%	\$51,606	40.9	\$128,333
47161	New Salisbury	1,442	1.2%	\$57,203	41.8	\$153,311
47143	Memphis	1,425	1.2%	\$81,548	38.9	\$191,667
47118	English	1,353	1.1%	\$45,032	44.4	\$104,651
47140	Marengo	1,083	0.9%	\$42,176	42.3	\$95,000
47115	Depauw	963	0.8%	\$43,516	42.8	\$141,018
47108	Campbellsburg	892	0.7%	\$45,521	41.4	\$103,611
47145	Milltown	778	0.6%	\$50,000	43.8	\$113,312
47125	Hardinsburg	673	0.6%	\$52,193	43.0	\$121,260
47141	Marysville	613	0.5%	\$52,647	43.4	\$159,167
47137	Leavenworth	567	0.5%	\$54,274	44.1	\$104,000
47177	Underwood	564	0.5%	\$65,735	44.5	\$144,800
47163	Otisco	555	0.5%	\$61,250	44.4	\$158,333
47135	Laconia	536	0.4%	\$64,038	44.5	\$151,068
47166	Ramsey	534	0.4%	\$55,135	42.2	\$152,885
47147	Nabb	410	0.3%	\$54,474	42.5	\$154,747
47142	Mauckport	403	0.3%	\$56,429	42.9	\$148,148
47120	Fredericksburg	383	0.3%	\$52,949	41.2	\$128,012
47175	Taswell	357	0.3%	\$46,607	46.8	\$93,704
47162	New Washington	353	0.3%	\$51,800	43.3	\$162,500
47116	Eckerty	343	0.3%	\$44,792	45.3	\$94,808
47114	Crandall	205	0.2%	\$79,779	43.1	\$177,206
47110	Central	199	0.2%	\$56,458	43.1	\$145,192
47160	New Middletown	79	0.1%	\$65,833	40.7	\$148,529
47123	Grantsburg	74	0.1%	\$41,667	41.8	\$103,846
47174	Sulphur	58	0.0%	\$40,000	43.7	\$105,000
Total		120,104		\$58,242	42.34	\$147,163

Source: Truven Health Analytics

Service Area Defined: Clark, Crawford, Floyd, Harrison, Scott, and Washington Counties in Indiana

Mortality

The following table shows mortality rates by several leading causes of death in each county:

Age Adjusted Mortality Rates 2015-2019	Clark	Crawford	Floyd	Harrison	Scott	Washington	IN	US
Total	954.8	947.9	910.6	840.0	1,134.8	951.8	852.0	726.3
Coronary Heart Disease	313.6	305.7	289.5	263.0	316.5	308.4	277.5	218.6
Cancer	203.0	193.6	193.4	191.0	245.7	212.1	193.4	156.4
COPD & Pneumonia	116.0	104.2	104.3	94.2	141.7	94.6	90.1	70.2
Accidents	67.6	91.8	62.5	71.5	105.9	86.9	65.8	70.2
Stroke	50.5	56.6	68.8	62.9	76.6	38.6	50.1	55.1
Mental and behavioural disorders	49.5	41.7	46.4	36.4	52.3	42.2	34.5	34.5
Diabetes	31.3	36.2	36.8	30.2	51.2	59.9	37.8	33.0
All Other Causes	121.9	98.4	107.8	86.5	140.5	105.2	102.8	88.2
Significantly Below IN Rates								
Significantly Above IN Rates								

Source: wonder.cdc.gov CDC Mortality Rates for 2015-2019

These rates are age-adjusted and signify the number of persons who expired per 100,000 population. The numbers in green are significantly below the Indiana rates while the numbers shown in red are significantly higher. These may indicate areas that are doing better (or worse) in the care of specific conditions. Floyd County has a mortality rate in COPD Pneumonia as well as Stroke. Scott County has opportunities to improve mortality in all highlighted conditions.

Cancer Incidence Rates

Cancer incidence rates are from the Indiana Cancer Registry and cover a five-year span. Clark, Crawford, Floyd, Harrison, Scott, and Washington Counties have higher than average incidence rates for lung cancer, while Clark and Floyd counties have higher than average incidence rates for breast cancer. These two cancer sites can be screened for the disease quickly. Thus, the higher rates may be a function of better detection. On the other hand, there may be higher numbers of people contracting cancer in these sites due to poor health behaviors or environmental hazards.

Age Adjusted Cancer Incidence	IN	Clark	Crawford	Floyd	Harrison	Scott	Washington
All Cancers	463.4	491.5	503.2	486.6	474.9	512.6	469.3
Prostate	87.3	43.8	53.5	51.1	45	55.2	48.6
Lung	72.3	91.4	91.5	80.3	92.9	95.4	90.1
Breast	130.8	136.1	122.8	146.4	128.5	100.9	119.5
Female Genitalia	8.4	7.9	^	^	^	^	^
Skin	21.9	19.5	^	19.2	19.3	22.6	14.0
Pancreas	13.5	11.9	^	13.0	15.0	13.1	14.8
All Other Causes	.	180.9	235.4	176.6	174.2	225.4	182.3

Significantly Below KY Rates

Significantly Above KY Rates

Source: IN State Cancer Registry, 2013-2017



^ Rates for cases under 20 are unstable and thus unreportable

Health Statistics and Rankings

Baptist Health Floyd collected health statistics and outcome measures from a wide variety of sources. The most recent data came from the Robert Wood Johnson County Health Rankings, published in 2020. The table on the following page shows health outcomes, health behaviors, clinical care availability, socioeconomic factors, and physical environment risks for each county in Baptist Health Floyd's service area. The rankings are based on the 92 counties in Indiana. Floyd and Harrison counties have good health factor rankings and Floyd County has a good clinical care ranking. Floyd and Harrison counties are ranked, overall, 51rd and 36th respectively. In 2017 Floyd County was ranked 43rd.

	Indiana	Clark (CL)	Crawford (CR)	Floyd (FL)	Harrison (HR)	Scott (SC)	Washington (WS)
Health Outcomes		80	88	51	36	90	67
Length of Life		73	88	42	41	91	82
Premature death	8,300	9,800	11,500	8,200	8,100	13,100	10,700
Quality of Life		77	89	55	34	83	37
Poor or fair health	20%	20%	22%	17%	17%	19%	18%
Poor physical health days	4.2	4.3	4.6	4.0	4.0	4.2	4.0
Poor mental health days	4.7	4.8	4.9	4.5	4.4	4.7	4.5
Low birthweight	8%	8%	9%	9%	7%	9%	7%
Health Factors		60	92	41	40	80	72
Health Behaviors		79	75	71	51	66	82
Adult smoking	22%	22%	23%	22%	20%	21%	21%
Adult obesity	33%	37%	30%	35%	38%	33%	41%
Food environment index	7.1	7.9	7.9	7.9	8.5	8.3	8.1
Physical inactivity	27%	28%	38%	28%	27%	29%	34%
Access to exercise opportunities	75%	89%	75%	82%	41%	52%	47%
Excessive drinking	18%	18%	15%	18%	17%	17%	16%
Alcohol-impaired driving deaths	20%	8%	31%	27%	12%	15%	23%
Sexually transmitted infections	514.2	426.6	208.2	394.4	235.6	398.0	283.9
Teen births	27	32	40	22	27	44	32
Clinical Care		50	85	12	30	84	65
Uninsured	10%	11%	11%	7%	8%	9%	10%
Primary care physicians	1,521:1	2,340:1		1,450:1	2,220:1	2,390:1	3,980:1
Dentists	1,780:1	2,790:1	10,560:1	1,470:1	2,370:1	3,980:1	5,590:1
Mental health providers	620:1	460:1	2,640:1	690:1	4,040:1	2,170:1	2,790:1
Preventable hospital stays	5,006	6,519	5,805	5,480	5,431	7,381	4,034
Mammography screening	42%	45%	36%	46%	49%	36%	39%
Flu vaccinations	49%	49%	40%	50%	52%	42%	45%
Social & Economic Factors		51	90	9	35	81	69
High school graduation	84%	91%	88%	94%	97%	87%	90%
Some college	63%	64%	41%	69%	54%	44%	48%
Unemployment	3.4%	3.4%	4.5%	3.3%	3.5%	3.9%	3.5%
Children in poverty	18%	16%	25%	15%	13%	21%	20%
Income inequality	4.4	4%	4.1	4.5	4.1	4.2	3.9
Children in single-parent households	34%	31%	37%	35%	25%	27%	30%
Social associations	12.3	10.0	4.7	11.2	8.0	10.1	6.8
Violent crime	385	356	238	132	82	194	
Injury deaths	77	85	76	75	82	106	108
Physical Environment		56	49	60	80	24	44
Air pollution - particulate matter	11.8	12.0	11.6	12.0	12.3	11.4	11.5
Drinking water violations	N/A	No	No	No	No	No	No
Severe housing problems	13%	11%	10%	11%	10%	10%	12%
Driving alone to work	83%	85%	85%	86%	87%	85%	84%
Long commute - driving alone	31%	33%	85%	32%	57%	40%	51%

Source: Robert Wood Johnson, CountyHealthRankings.org 2020 County Rankings
 Data extracted: 2/2/21

 Significantly Below KY Rate
 Significantly Above KY Rate

Primary Data

There are six health departments responsible for the counties Baptist Health Floyd serves: Clark County Health Department; Crawford County Health Department; Floyd County Health Department; Harrison County Health Department; Scott County Health Department; and Washington County Health Department. Through these contacts, as well as other public agencies, public surveys and focus groups, Baptist Health Floyd is soliciting primary feedback on the updated health issues confronting its service area today.

Community Healthcare Resources

There are a number of healthcare resources in Baptist Health Floyd’s service area, but they are not distributed evenly. The Baptist Health Planning Department catalogued the various types and locations of these resources.

Hospitals

There are a large number of hospitals in the service area, with 472 licensed acute care beds, 99 critical access beds, 38 rehab beds, and 10 proprietary license beds. The table below lists all of the non-government hospitals in the service area.

Hospital	Type	Licensed Beds	Location
Baptist Health Floyd	Acute	236	Floyd
Clark Memorial Hospital	Acute	236	Clark
Harrison County Hospital	CAH	25	Harrison
Physician's Medical Center LLC	Misc	10	Floyd
Southern IN Rehabilitation Hospital	Rehab	38	Floyd
Ascension St. Vincent Salem	CAH	25	Washington
Scott Memorial Hospital	CAH	25	Scott

Source: Indiana State Department of Health I, Hospital Directory, as of 2/19/21

<http://www.in.gov/isdh/reports/QAMIS/hosdir/wdirhos.htm>

Clark Memorial Hospital is an acute care facility owned by Regional Health Network of Kentucky and Southern Indiana, a joint venture of LifePoint Health and Norton Healthcare. Harrison County Hospital is a critical access hospital. This is a special hospital designation from the Centers for Medicare and Medicaid that acknowledges the need to have hospitals in rural communities that can serve basic needs and stabilize patients for transfers to tertiary facilities for more extensive care. Harrison County Hospital became affiliated with Norton Healthcare in 1981. According to its website, the hospital serves 60,000 residents in Harrison and Crawford counties in Indiana and Meade County in Kentucky.

Other Licensed Facilities

According to the Indiana State Department of Health, there are five rural health clinics and four ambulatory surgery centers in the defined service area. Unlike Kentucky, Indiana is not a certificate of need state. Many of the services that must be state licensed in Kentucky do not require specific Indiana state licensing.

Health Departments

As stated earlier in this document, there are six separate health departments located in the Baptist Health Floyd service area: Clark County Health Department; Crawford County Health Department; Floyd County Health Department; Harrison County Health Department; Scott County Health Department; and Washington County Health Department.

Physicians

Baptist Health conducted a primary care strategic plan in 2018, including a physician manpower study that counts the number of physicians in its service area as defined by Stark II regulations, which is slightly different from the CHNA service area. This plan guides Baptist Health Louisville to recruit and/or employ primary care to the area. The plan will be adjusted over time as strategic plans are implemented and patient access locations are opened throughout the service area.

Committee Discussion

During the Community Health Needs Assessment Committee meeting, members expressed their thoughts about several health concerns in the area and where Baptist Health Floyd should concentrate its resources over the next three years.

After studying the primary and secondary data, the committee discussed the issues. The committee agreed that the results of primary data along with data collected by community partners would be beneficial in highlighting the most pressing needs of the community. Comparing primary data from the survey conducted in 2018 to the results of the survey in 2021 did highlight areas of concern. There were noted increases in the number of people who have been directly impacted individually or family members, friends by mental health issues as well as opioid use. Obesity and Joint and Back pain ranked high as in the last assessment in both primary and secondary data sources.

Prioritized Health Issues

Community survey responses identified nine community needs: The team employed an algorithm to rank the needs based on the following criteria: magnitude, severity, opportunity to intervene at a prevention level, degree of success in impacting the problem, and resources. The analysis involved applying a weight to each of the criteria based on four parameters: will the action have no impact, minimal impact, some impact, or maximum impact? Assigning the weights and totaling the score for each criteria, the algorithm rearranged the ten needs. Action items and measures were then developed for all ten needs, but only four will be included in the strategic implementation plan:

- Cardiovascular disease
- Mental Health
- Social determinants of health (food security, transportation and housing)
- Substance Use Disorder (Alcohol, Tobacco, and other Drugs)

The other five community needs identified by the survey are: Obesity, Cancer, Injury/Violence, Healthcare access, and Joint and Back pain. Although they are not included in this document, Baptist Health Floyd will look for opportunities to develop action items for the remaining five community needs.

Communications Plan

The IRS guidelines for a Community Health Needs Assessment call for making the results of the process widely available. To meet this requirement, Baptist Health Floyd will publish this document on its website and make hard copies available to the public upon request. These results will be incorporated into Baptist Healthcare System’s annual IRS tax form 990 submission.

Conclusions

Baptist Health Floyd will continue to use this Community Health Needs Assessment to allocate resources to improve the health of its service area. The committee will have oversight of annually evaluating measures of success relative to the prioritized issues and complete an updated Strategic Implementation Plan.

Strategic Implementation Plan

The strategic implementation plan is outlined by each prioritized health need, with a goal(s) for each need, and specific strategies to meet those goals.

Cardiovascular Disease

Identified Health Need: Cardiovascular Disease				
Goal 1: Provide education to increase awareness of cardiovascular risk factors.				
Strategy	Action Plan	Evaluation Plan	Internal Resource(s)	External Partner(s)
1.1 Online Risk Assessments	Offer risk assessments on the hospital website for risk factors that lead to cardiovascular disease, including heart health, stroke, and healthy weight.	Track the number of assessments completed annually, including the percentage scoring as high-risk who are contacted by a BH Health provider.	Digital Marketing	(none)

1.2 Cardiovascular Screenings	Offer cardiovascular screenings to educate on risk for cardiovascular disease.	Track the number of screenings offered and the number of patients with abnormal results, provide follow-up where indicated.	Healthier Community Coordinators	Various Community Partners
1.3 Tobacco Awareness Outreach	Conduct outreach to community to educate about tobacco use and resources to quit. Outreach to youth on the dangers of tobacco use, including vaping.	Track the number of locations outreached to and the number of encounters during outreach. Report annually.	Healthier Community Coordinators	Various Community Partners

Goal 2: Encourage health behaviors that reduce the incidence and impact of cardiovascular disease.

<i>Strategy</i>	<i>Action Plan</i>	<i>Evaluation Plan</i>	<i>Internal Resource(s)</i>	<i>External Partner(s)</i>
2.1 Increase Physical Activity	Increase the physical activity of Floyd County residents through initiatives of the Physical Activity Coalition.	Track participation in events annually.	Healthier Community Coordinators	New Albany Housing Authority New Albany Parks Dept. Floyd County Schools Various community partners
2.2. Farmer's Market	Improve access to healthy foods of marginalized populations through the New Albany Farmer's Market.	Solicit feedback from community partners regarding the success of fruit and vegetables subsidies.	Healthier Community Coordinators	New Albany Farmer's Market

<p>2.3 Cooking Demonstrations</p>	<p>Provide education on how to incorporate healthy foods into the diet by offering monthly cooking demonstrations.</p>	<p>Track the number of classes offered and the number of attendees at each cooking demonstration.</p> <p>Track baseline fruit and vegetable consumption, barriers, and post-class fruit and vegetable consumptions.</p> <p>Provide supplies needed.</p>	<p>Healthier Community Coordinators</p>	<p>New Albany Housing Authority</p> <p>Let Us Learn Headstart</p>
<p>2.4 Tobacco Cessation Resources</p>	<p>Educate staff internally on the referral process to the DSM clinic, state quitline, and other available resources.</p> <p>Educate the community on tobacco cessation clinic, state quitline, and other available resources for cessation.</p>	<p>Track the number of trainings, cross reference with number of referrals to DSM clinic. Track the number of referrals to the state quitline and the results. Report annually.</p>	<p>Healthier Community Coordinators</p> <p>Disease State Management</p>	<p>Various community partners</p>

Mental Health

Identified Health Need: Mental Health				
Goal 1: Incorporate Motivational interviewing techniques to provide a patient-focused approach to behavior change.				
<i>Strategy</i>	<i>Action Plan</i>	<i>Evaluation Plan</i>	<i>Internal Resource(s)</i>	<i>External Partner(s)</i>
1.1 Motivational Interviewing (MI)	<p>As an effective strategy to motivate behavior change while being cognizant of a person's individual experience, incorporate a Motivational Interviewing approach into all community outreach and education.</p> <p>When possible, offer Motivational Interviewing training to care providers to improve patient engagement and satisfaction.</p>	<p>Track the types of outreach and education in which MI is incorporated.</p> <p>Track the number of training attendees and the agencies represented by the attendees. Report annually.</p>	Healthier Community Coordinators	<p>New Albany Housing Authority</p> <p>Floyd County Schools</p> <p>Floyd County Government</p>
1.2 Trauma-Informed Training	<p>Offer trauma-Informed training to various community groups. Integrate Trauma-Informed approach into all community outreach and education.</p>	<p>Track the types of outreach and education in which Trauma-Informed is incorporated.</p> <p>Track the number of training attendees and the agencies represented by the attendees. Report annually.</p>	Healthier Community Coordinators	<p>Title 1 Schools</p> <p>Various community collaborative groups</p>

Goal 2: Participate with coordinated community groups focused on addressing mental health to coordinate effort for greatest impact.				
<i>Strategy</i>	<i>Action Plan</i>	<i>Evaluation Plan</i>	<i>Internal Resource(s)</i>	<i>External Partner(s)</i>
2.1 System of Care	Engage with Indiana's System of Care (SOC) to improve access to and quality of behavioral and mental health services for youth and families. Focus on SOC work in Clark, Floyd, and Crawford counties.	Track for engagement with SOC strategic goals and report annually.	Healthier Community Coordinators	Indiana System of Care (Family and Social Services Administration)
2.2 Prevent Child Abuse Coalition	Participate on the Prevent Child Abuse Coalition to address the SDoH related to safety and support programs.	Track participation in coalition efforts.	Healthier Community Coordinators	Prevent Child Abuse America

Social Determinants of Health

Identified Health Need: Social Determinants of Health				
Goal 1: Address social determinants of health related to food security.				
<i>Strategy</i>	<i>Action Plan</i>	<i>Evaluation Plan</i>	<i>Internal Resource(s)</i>	<i>External Partner(s)</i>
1.1 Food Security	<p>Improve community access to healthy food and nutrition and increase health education, target populations of higher need.</p> <p>Implement a Prescription Produce Program in the community.</p>	<p>Solicit feedback from New Roots on participation in the community, including identified barriers.</p> <p>Evaluation of Prescription Produce Program participants.</p>	Healthier Community Coordinators	<p>New Roots</p> <p>Various community partners</p>

Goal 2: Address social determinants of health related to transportation.				
<i>Strategy</i>	<i>Action Plan</i>	<i>Evaluation Plan</i>	<i>Internal Resource(s)</i>	<i>External Partner(s)</i>
2.1 Transportation	Reduce the number of patients that do not receive care due to a lack of or unreliable transportation	Collect data from various sources including local Unite Us users at Baptist Health Floyd to evaluate gaps and work on implementation needs.	Healthier Community Coordinators	Various community partners
Goal 3: Address social determinants of health related to housing.				
<i>Strategy</i>	<i>Action Plan</i>	<i>Evaluation Plan</i>	<i>Internal Resource(s)</i>	<i>External Partner(s)</i>
3.1 Housing	Improve access to affordable and healthy home environments.	Solicit feedback from New Albany Housing Authority and other community partners working on housing accessibility.	Healthier Community Coordinators	New Albany Housing Authority Various community partners

Substance Use Disorder

Identified Health Need: Substance Use Disorder				
Goal 1: Improve awareness of substance use disorder and reduce stigma of addiction.				
<i>Strategy</i>	<i>Action Plan</i>	<i>Evaluation Plan</i>	<i>Internal Resource(s)</i>	<i>External Partner(s)</i>
1.1 Overdose Fatality Review Board	Work with the Floyd County Overdose Fatality Review Board to review deaths due to substance use overdoses.	Use information from reviews to understand how to prevent that type of death from occurring again. Use data to inform and plan interventions.	Healthier Community Coordinators	Indiana Department of Health Floyd County Health Department Our Place Various community collaborative groups
1.2 Anti-stigma Awareness	Provide education to reduce stigma related to substance use disorder to hospital staff and community.	Track the number of outreach events.	Healthier Community Coordinators	ECHO Grant Partners

Goal 2: Utilize opportunities afforded by the hospital Emergency Department to intervene on factors contributing to substance abuse.				
<i>Strategy</i>	<i>Action Plan</i>	<i>Evaluation Plan</i>	<i>Internal Resource(s)</i>	<i>External Partner(s)</i>
2.1 Prescription Drop Boxes	Educate on use of prescription drop boxes for safe prescription drug disposal. Encourage use by coordinating a drop box in the Emergency Department. Promote placement through social media, flyers, and take-back days.	Track placement of prescription drop box and utilization.	Healthier Community Coordinators	ECHO Grant Partners
2.2 Naloxone Boxes	Educate on use of Naloxone boxes for drug overdoses. Promote through social media, flyers, and Peer Recovery coaches. Partner with the Floyd County Health Department to increase awareness of this initiative.	Track the number of boxes distributed in the county. Solicit feedback from community partners regarding the success of this initiative.	Healthier Community Coordinators	ECHO Grant Partners
2.3 Peer Support	Use grant funding to implement a pilot project providing peer support to patients in the Emergency Department presenting with substance use disorders. Funding will cover a part-time Peer Recovery Specialist designated to work with the patient and their support system, and provide resources and referrals to patients accepting treatment.	Track the number of patients provided with Peer Recovery Specialist supportive services and any outcomes from interaction (referral to treatment, etc.).	Healthier Community Coordinators Emergency Department	Floyd Memorial Foundation Our Place

Appendix A – Data Sources

Health Departments

Clark County Health Department

<http://www.clarkhealth.net/>

Crawford County Health Department

<http://crawfordcountyhealthdepartment.com/>

Floyd County Health Department

<http://floydcountyhealth.org/>

Harrison County Health Department

<http://www.harrisoncountyhealth.com/>

Scott County Health Department

<http://www.scottcountyinhealthdept.com/>

Washington County Health Department

<http://www.washcohealth.com/>

National Sources

Broad Street Subscription Database

Robert Wood Johnson Foundation County Health Ranking and Roadmap

<http://www.countyhealthrankings.org>

Centers for Disease Control and Prevention

<http://www.cdc.gov/>

Rural Assistance Center

<http://www.raconline.org/states/kentucky.php>

U.S. Department of Health and Human Services – *Healthy People 2020*

<http://healthypeople.gov/2020/>

U.S. Department of Health and Human Services – Community Health Status Indicators
<http://www.communityhealth.hhs.gov/homepage.aspx>

State Sources

Indiana University School of Public Health
<https://fsph.iupui.edu/community-resources/resources/index.html>

Indiana State Department of Health
<https://www.in.gov/isdh/>

Indiana Hospital Association
<http://iha.org>

Community Resource Guide
<https://www.in.gov/fssa/files/Clarksville%20Area%20Office%20Resource%20Guide.pdf>

Appendix B – 2021 Baptist Health Louisville Public Survey Instrument

1. Please select the top 3 health challenges you face.

- Cancer
- Diabetes
- Overweight/obese
- Lung disease
- High blood pressure
- Stroke
- Heart disease
- Joint pain or back pain
- Mental health issues (depression, anxiety, etc.)
- Alcohol overuse
- Drug addiction (prescription, illegal, etc.)
- Infectious disease (Hepatitis A/B/C, HIV, etc.)
- Contagious disease (COVID)
- I do not have any health challenges
- Other

2. Please select the top 3 health challenges our community faces.

- Healthcare access (hospital, healthcare provider, ambulance, etc.)
- Social determinants (housing/homelessness, economic stability, transportation, education, hunger, ethnicity/race)
- Prevention Services (education, screening, etc.)
- Environmental quality (air, water, parks, etc.)
- Injury and violence (crime, guns, abuse, neglect, car accidents, etc.)
- Substance use disorders (prescription drugs, illegal drugs, alcohol)
- Tobacco use (including secondhand smoke exposure)
- Mental Health (depression, anxiety, dementia, etc.)
- Heart disease, stroke, diabetes, high blood pressure

-
- Cancer
 - Infectious disease (Hepatitis A/B/ C, HIV, etc.)
 - Contagious disease (COVID)
 - Maternal, Infant, Child health (pregnancy)
 - Obesity and Nutrition (lack of access to fresh fruits and vegetables)
 - Physical Activity (spaces to walk/exercise)
 - Oral Health
 - Knowledge of resources available in community
 - Other

3. Pick 3 items needed to improve the health of our community.

- Access to healthy food (fresh produce)
- Job opportunities
- Mental health services
- Recreation facilities (parks, community activities)
- Transportation
- Wellness services (Employee or Insurance sponsored)
- Specialty physicians
- Free or affordable health screenings
- Safe places to walk/play
- Substance use disorder rehabilitation services
- Access to my doctor/healthcare provider
- I don't know
- Other

4. Please choose all statements below that apply to you.

- I exercise at least 3 times per week.
- I eat at least 5 servings of fruits and vegetables each day.
- I routinely get more than 8 hours of sleep every night.
- I use sunscreen or protective clothing for planned time in the sun.
- I have access to a wellness program through my employer/insurance.
- None of the above applies to me.
- I routinely get at least 8 hours of sleep per night.

5. Which of the following applies to you? (choose all that apply)

- I smoke tobacco products (including e-cigarettes and vaping).
- I chew tobacco products.
- I use illegal drugs.
- I misuse prescription drugs.
- I combine alcohol with prescription drugs.
- I have more than 4 alcoholic drinks per day.
- I have more than 15 alcoholic drinks per week.
- I eat fast food more than once per week.
- I consume sugary drinks daily.
- I routinely view more than 2 hours of screen time daily.
- I feel lonely or isolated most days.
- None of the above.

6. Which of the following applies to you? (choose all that apply)

- In the past 12 months we worried whether our food would run out before we got money to buy more.
- In the past 12 months the food we bought just didn't last and we didn't have money to get more.
- In the past 12 months I was unable to pay the rent or mortgage on time.
- In the past 12 months I have lived in more than 3 places due to lack of stable housing.
- In the past 12 months, I have been homeless or living in a shelter.
- In the past 12 months, I have had difficulty paying my electric, gas, oil, or water bills.
- In the past 12 months, I have had problems with work or study due to childcare issues.
- In the past 12 months, I have had inconsistent internet access or no internet access.
- None of the above apply.

7. As far as your living situation, do any of the following apply to you? (circle all that apply)

- Bug infestation
- Mold
- Lead paint or pipes
- Inadequate heat
- Appliances not working
- Lack of smoke/carbon monoxide detectors
- Water leaks

8. On a typical day how would you rate your level of stress?

- Very high
- High
- Moderate
- Low
- Very low

9. How do you cope with stress?

- Watch TV
- Read
- Listen to music
- Talk with family and/or friends
- Talk with a mental health professional
- Prayer
- Meditation
- Exercise
- Eat unhealthy foods
- Use nicotine products (cigarettes, vaping, chewing)
- Drink alcohol
- Consume illegal drugs
- Take prescription medications
- Hurt self
- Other

10. In the past 12 months, have you felt unsafe in any way? (physically hurt, insulted, threatened, screamed or cursed at)

- Yes
- No

11. Have you ever been diagnosed (professional or self-diagnosis) with any of the following disorders? (Check all that apply)

- Substance use disorder (drugs, alcohol, etc.)
- Anorexia/Bulimia
- Generalized Anxiety Disorder (GAD)
- Attention Deficit Hyperactivity Disorder (ADD/ADHD)

-
- Bipolar Disorder
 - Borderline Personality Disorder (BPD)
 - Depression
 - Obsessive Compulsive Disorder (OCD)
 - Panic Disorder
 - Post-Traumatic Stress Disorder (PTSD)
 - Schizophrenia
 - Seasonal Affective Disorder (SAD)
 - Social Phobia/Anxiety
 - None
 - Other

12. Are there any issues that prevent you from accessing care? (Check all that apply)

- Cultural/religious beliefs
- Don't know how to find a medical healthcare provider
- Don't know how to find a mental healthcare provider
- Lack of trust of the medical community
- Child care
- Fear (not ready to face/discuss health problem)
- Lack of availability of medical healthcare providers
- Lack of availability of mental health provider
- Language barrier
- No insurance and unable to pay for healthcare
- Unable to pay co-payment/deductible
- Transportation
- Other

13. Which of the following preventive procedures have you had in the past 12 months?

- Mammogram (female)
- Pap smear (female)
- Prostate cancer screening (male)
- Vaccinations (COVID, flu shot, etc.)
- Cholesterol screening

- Vision screening
- Hearing screening
- Cardiovascular screening
- Colon/rectal exam (colonoscopy, etc.)
- Blood pressure screening
- Blood sugar screening
- Dental cleaning/exam
- Physical exam
- Blood test
- HIV/Hepatitis A/B/C screening
- None of the above

14. Where do you receive routine health care? (Check all that apply)

- Physician's office
- Health department
- Emergency room
- Urgent care clinic
- Retail clinic (Kroger, Walgreen's, etc.)
- Federally qualified clinic (Family Health Center, etc.)
- Chiropractor
- Mental health care provider (psychiatrist, counselor)
- Holistic measures (acupuncture, herbs, etc.)
- Other
- I would not seek health care

15. Where do you receive emergency medical services?

- Emergency room
- Urgent care clinic
- Physician's office
- Health department
- Other clinic
- I do not seek health care

16. What best describes your gender?

- Woman
- Man
- Non-binary
- Prefer not to say

17. What is your zip code?

- 47119
- 47122
- 47124
- 47146
- 47150
- 47151
-

18. Which category is your age?

- Under 18
- 18-29
- 30-45
- 46-60
- 61-74
- 75+

19. What is your highest level of education?

- K-8th grade
- Some high school
- High school graduate
- GED
- Technical school
- Some college
- College graduate
- Graduate school
- Doctorate

20. What is your race?

- African American
- Caucasian/white
- Asian
- Hispanic
- American Indian/Alaska Native
- Native Hawaiian/Pacific Islander
- Biracial
- Other

21. Where do you get most of your health information? (Check all that apply)

- Doctor/health care provider
- Social media (Facebook, Twitter, etc.)
- Family, friends, neighbor
- Health department
- Hospital
- Internet
- Library
- Newspaper/magazines
- Radio
- Church group
- School
- TV
- Worksite
- Other

22. Do you have health insurance?

- Yes
- No
- No, but have had within the last 12 months

23. What is your employment status?

- Full time
- Part time
- Self employed
- Unemployed
- Retired
- Student

24. What is your annual household income?

- Less than \$20,000
- \$20,000 to \$39,999
- \$40,000 to \$59,999
- \$60,000 to \$79,999
- \$80,000 and over

25. Do you have any children under the age of 18 living with you?

- Yes
- No